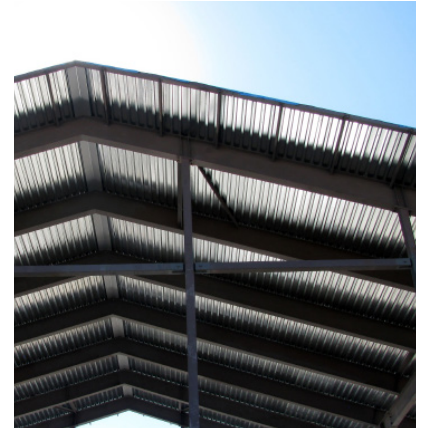
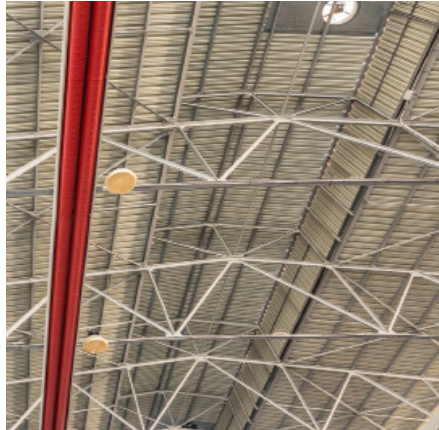


3000

Alkyd Dryfall Coatings



CruSPEC 3000 is an excellent hiding, quick dry, low VOC, spray applied drop dry coating. Overspray falls as dry powder in 8-16 feet (temperature and humidity dependent).

Available in white and custom batched colors.

FEATURES AND BENEFITS

- Overspray drops dry
- High hide
- Excellent stain blocking
- Quick dry
- Flash rust resistant

USES

- Industrial Ceilings
- Bar Joists
- Roof Decking
- Pipes
- Beams
- Exposed HVAC



216-531-0710








info@continentalpaints.com




PHYSICAL PROPERTIES

Part A Product Code	96-4450
Part B Product Code	96-0228
Volume Solids	Part A: 45.3 ±2.0% Part B: 39.0 ±2.0% Blended: 43.2 ±2.0%
Gloss @ 60 °	>70 @ 1 - 1.5 mils DFT
Mixing Ratio	2 parts: 96-4450 1 part: 96-0228
Viscosity @ 77 °F (blended by volume)	20-27 seconds #3 Zahn Signature Cup
VOC	Part A: 1.45lbs/gal 170.0 g/l Part B: 0.0 lbs/gal 0.0 g/l Blended: 0.97 lbs/gal 113.7 g/l
Spreading Rate	692 sq ft/gal @ 1 mil DFT
Recommended DTM film thickness	Mils Wet: 4.0 - 5.0 mils Miles Dry: 1.6 - 2.0 mils Mils Max: 6 mils
Drying	Set to Touch: 10 - 15 minutes Tack Free: 20 - 25 minutes To Handle: 1 - 2 hours Total (full properties) 24 hours
Working potlife	1.5 hours @ 75 °F; 10 hours 85 °F

STAY CONNECTED

-  @CoatingsPros
-  @ContinentalProductsCo
-  @coatingspros
-  Continental Products
-  ContinentalPaints.com

2926 Chester Avenue
Cleveland, Ohio 44114
Headquarters: 440-605-1020
f: 440-605-1120
Manufacturing Plant: 216-531-0710
f: 216-289-1745

Part of the  Performance Coatings Family
crupc.com

© 2021 Continental Products™, all rights reserved. Printed in U.S.A. All logos/images are trademarks of Continental Products. Cleveland, OH USA.



216-531-0710



info@continentalpaints.com